







THE MAIN COMPANY

ESTABLISHED 1978

## WELCOME TO THE FIRST ISSUE OF THE MAIN HOME

Autumn slowly envelops us in cool, crisp colours of bright mornings and stunning orange and pink sunsets. It is a time to soak in the changing colours around us and prepare our indoor living spaces for longer periods inside. In this issue we feature a stunning 'Perfectly Pink' kitchen in South Bank (p.4), the glorious green of the

Harley Green kitchen in Hammersmith (p.20), the fiery autumn Heat orange in the Hampshire tree house (p.28) and the calming Basalt blue in the Cornwall project (p.32). Kitchens equal food and food equals recipes, we have included a foodie page from Bora, one of our appliance suppliers. We also have additional references

from some of our main suppliers, Buster and Punch, Lacanche, Bora, 1810 and The Little Greene Company. This issue focuses on two flooring projects, one in Cornwall and the other in Archer Street and the commercial development for this edition presents the Archer Street Bar.

### Directors

Chris Main  
Karan Main  
Alex Main  
Tom Main

### Editor

Tom Hutchinson  
tomh@maincompany.com

### Press Enquires

Megan Collyer  
megan@inthewhiteroom.com

### Sales Enquires

sales@maincompany.com

### Advertising Enquires

sales@maincompany.com

### Photographers

Chris Snook  
Sean Knott

### Design Service

If you've been considering making a change to your home then why not get in touch with one of our designers:  
sales@maincompany.com  
01423 330451

### Cover Images

Chris Snook  
chrisnookphotography.co.uk

Published by The Main Company (York) Ltd. Printed by NorthWolds. All rights reserved. Reproduction in whole or in part without prior permission of the Editor is strictly prohibited. All prices are inclusive of VAT and are correct at the time of print but subject to change. The Main Company (York) Ltd. takes no responsibility for omissions or errors.



# CONTENTS



P4-7



P10-11



P12-15



P16-17



P18



P20-23



P24-25



P26-27



P28-29



P30-31



P32-35



P36





Timeless Shaker meets reclaimed and rustic in The Main Company Cornwall bespoke kitchen project. / PHOTOGRAPHY (Sean Knott)



Brimming with luxurious extras including an envy inducing Lacanche Classic Citeaux in Rose Quartz, a Quooker boiling tap and Gaggenau wine fridge.



This stunning Victorian townhouse renovation is home to this beautifully transformed kitchen. A wealth of character, charm and quirkiness flows through the home, further enhanced and improved by the current owners. Each and every room is being transformed, with original features being complemented by the owner's own personal style and taste.

The kitchen is the heart of any home, and this kitchen was to be no different. The owners wanted a space that they could enjoy with friends and family, and not only looked good but was equally functional.

This stunning Victorian townhouse had a complete transformation. / PHOTOGRAPHY (Chris Snook)



Be bold when selecting colours. Walls: "Get Plastered" by Dowsing and Reynolds. Cabinets: "Lamp Black" by Little Greene. / PHOTOGRAPHY (Chris Snook)

# Perfectly Pink

South Bank, York

This striking kitchen has been meticulously thought out. Each and every detail has been carefully considered, from the Ribchester Shaws Sink to the Armac Martin Leebank handles. The kitchen offers the perfect combination of colours, textures and materials. The classic style kitchen has been finished in Little Greene Company Lamp Black paint, contrasted beautifully by the Calacutta Black quartz worktops. The cabinet colour contrasts the pink wall colour and exposed brickwork perfectly, creating a quirky twist on a classic kitchen style. The kitchen comprises a variety of cabinet styles including exposed shelving, full-length cupboards and an island with a seating area.





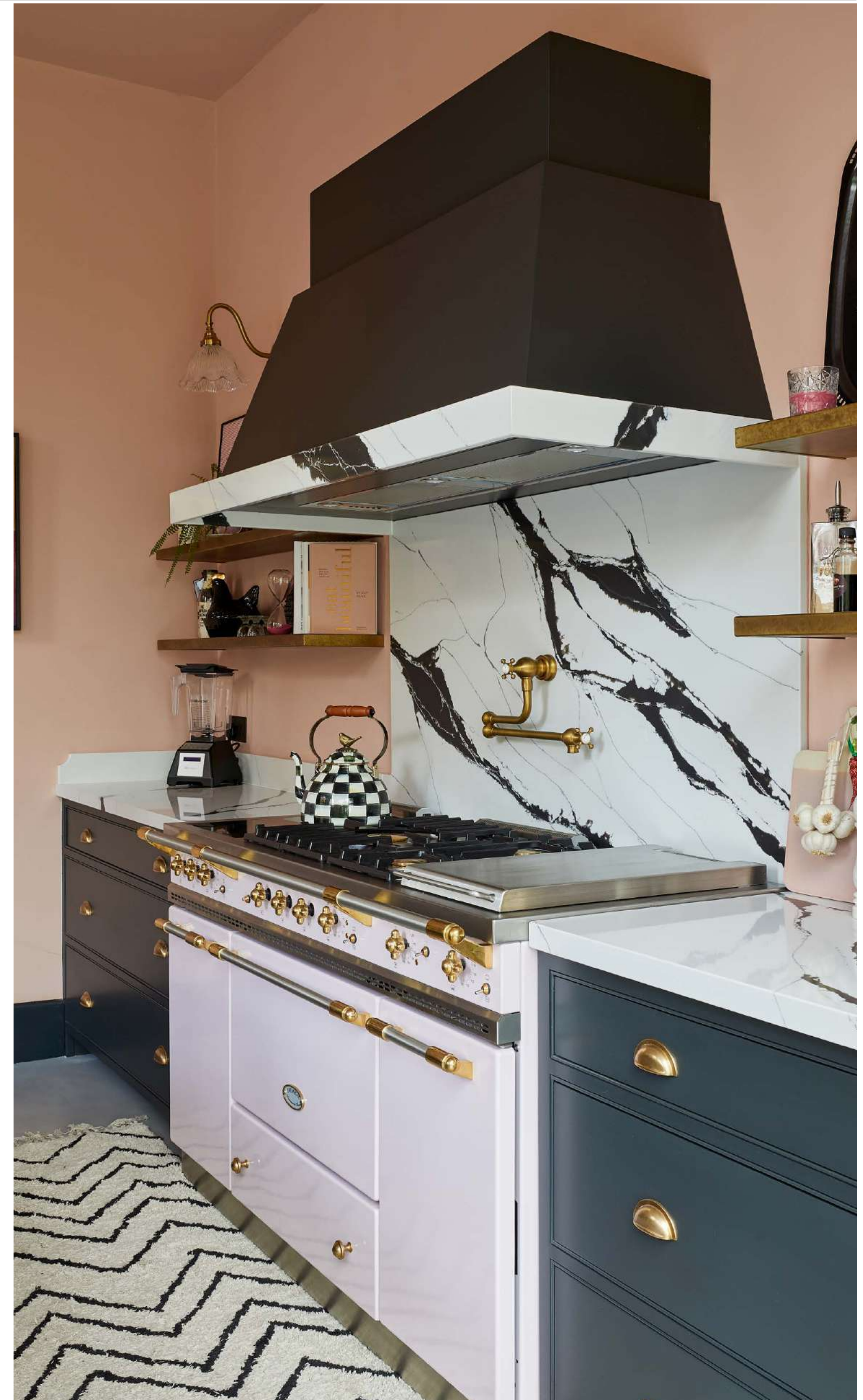
Pink Slip® 220.

The Deco marble fireplace in a stepped design makes a massive statement in the snug next to the kitchen. The atmospheric black hues are brought through from the kitchen units and is used on the walls. The reclaimed engineered oak round table with reeded drum base is the centre point for the family to join for long meals sitting in comfortable black leather industrial chairs.

The stunning rose quartz Lacanche Citeaux with combination top of induction, gas and la Plancha plate is flanked by large pan drawers in Lamp Black. The aged brass pot filler from Perrin and Rowe and antique brass finish cup handles from Armac Martin seamlessly create an original wall with the aged brass shelves. The combination of the Calacatta Black worktop up into the backsplash and canopy hood collar brings a classic continuity.



Wrapped aged brass shelves. / PHOTOGRAPHY (Chris Snook)



PANTONE 14-1911  
Candy Pink

Think pink for interiors. / PHOTOGRAPHY (Dee @ Copper and Wild)





# Inside Lacanche



## The Burgundian Factory To Your Home

If you would like more information or are interested in purchasing a Lacanche range cooker then contact our experienced kitchen team on 01423 330451 or email [sales@maincompry.com](mailto:sales@maincompry.com).

We were given the amazing opportunity of visiting Lacanche, a factory based in the heart of the Burgundian countryside in France.

One of the first things you approach from inside the entrance of the factory is a huge Spiertz 900 ton press. This die presses sheet metal to make the range paneling.

Moving through the factory you notice how many people are involved in its production.

From welding individual components such as the feet, to assembling the doors, like our products, they are truly hand-made to order.

As you can imagine there are hundreds of components in every range cooker. The factory organisation and production flow is second to none.

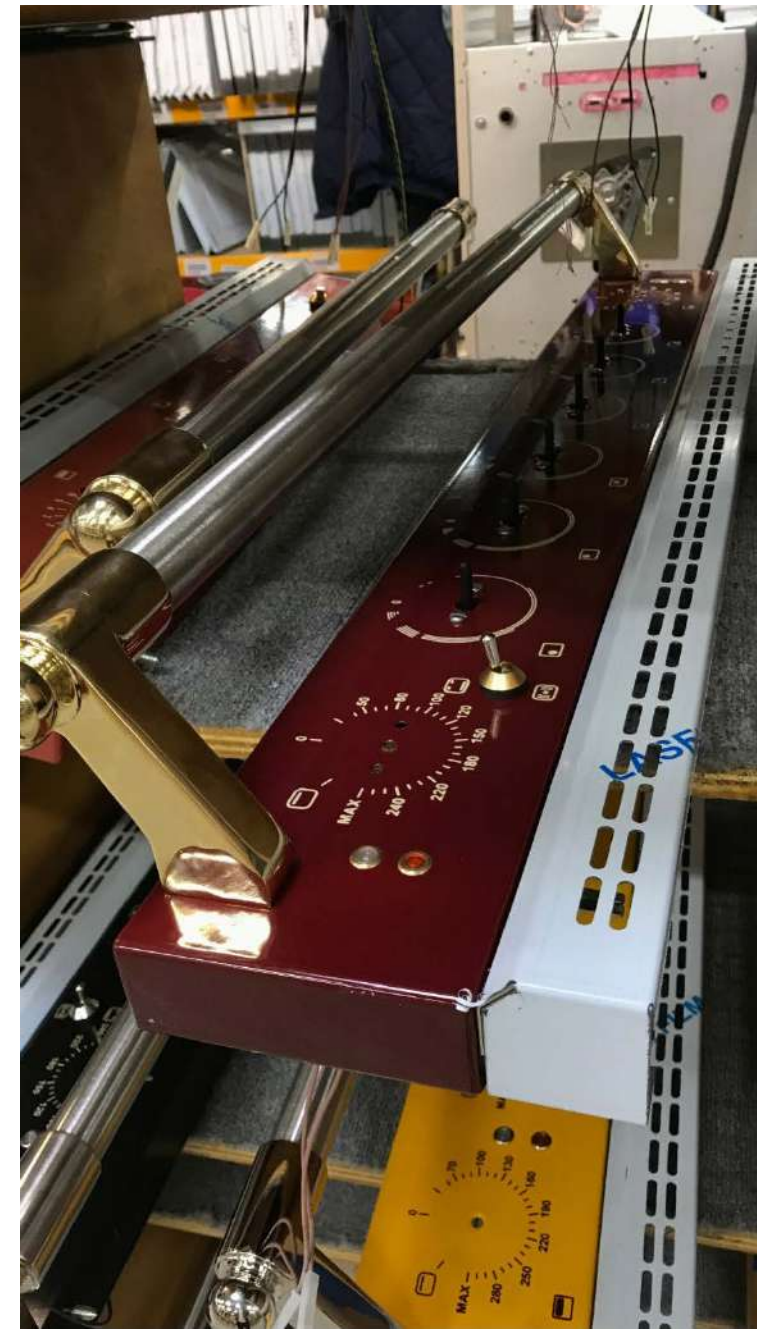
Before any range is approved for dispatch it receives a final quality control check for both

performance and aesthetics.

Accross from the factory are the showrooms.

The buiding is actually the original foundry and showcases products from the first ever Lacanche right up to the current product range.

We want to say a huge thank you to the whole Lacanche team. To Jean Jacques for his fantastic hospitality and to Steven and Candice for making the trip possible.



Components ready for assembly at the end of the production line. / PHOTOGRAPHY (Tom Hutchinson)

## Serious Cookers for Serious Cooks

Behind the stunning exterior of a Lacanche range lies a seriously heavy-duty professional cooking platform engineered to perform in the world's toughest kitchens. From the sheer elegance of the Classic models to the stylish simplicity of the Moderne - if you take cooking seriously a Lacanche is the cooker you will have dreamt of for years.





Designed by SIÂN PARRY JONES, an accomplished individual with extensive experience in beauty brand distribution, retail, spa design, development and interior design.

Siân started her career in the skincare and cosmetics industry holding positions at Estée Lauder and Yves Saint Laurent respectively, before moving onto become the UK retail director at Aveda UK, where she developed a sales and marketing strategy that concurred with the ethical, aesthetic and cultural values of the brand.

Siân then worked at both Urban Retreat as Managing Director, and as Operations Director for Elemis in the development and launch of the new travel-spa facilities.

Siân's entry into the interior design world originated partly from her time spent as the Head of Personal Shopping at Harrods, where she launched the highly successful lifestyle concierge service, 'By Appointment Beyond' and contributed towards the design of the Penthouse Suite and the refurbishment of Weddings & Celebrations.

This innovative venture included travel, interior design, a 360° concierge service and event management was created to provide a more extensive and highly personal professional service for the Harrods elite clientele. This scheme, with its precise attention to detail, personalisation and array of luxury items, alongside working with The Studio at Harrods gave Siân the perfect introduction for her to progress into design.

Siân has worked across the globe on projects including the renovation of a privately owned hotel in Antigua, the ongoing refurbishment of an island in the Grenadines, the creation of Fletcher's Cottage Spa in Scotland, private residences in Portugal, Jersey, Meribel, Somerset and London alongside various other developments. In 2011 Siân co-founded Archer Street Cocktail Bar in Soho, which has gone on to become one of the top live entertainment destinations in London. Its continued success has led to the opening of a new site on Northcote Road SW11 in 2019.



Start the night right! / PHOTOGRAPHY (Ash Edmonds @badashproducts)



An experimental cocktail bar with live music. / PHOTOGRAPHY (Archer Street & Siân Parry Jones)

# Archer Street

Spanning over two floors, Archer Street is the newest addition to South West London's bustling bar scene. A place where groups can gather to catch up on days gone by, or enjoy their evening, sampling the extensive cocktail menu.

The Main Company worked closely with the team at Archer Street to deliver the brief to create the feel of a member's bar, without the expensive membership. On the first floor is a cocktail bar, with a themed 'Après Ski' style bar to the lower ground floor. Through a combination of materials, The Main Company helped bring the aesthetic and exclusive feel of the slopes to SW11, Central London.



# Origin 94



The **Reclaimed Silver Barn Spruce Cladding** is an ideal choice for any space. Character and authenticity flow throughout the reclaimed boards. Each and every plank boasts a stunning, silver patina, complemented by additional distressed characteristics, including saw marks and original nail holes.

Reclaimed from old beams, each piece has been kiln dried to remove any excess moisture to provide a material stable for the modern home.

The sought after silver colours are a popular choice and proves a fantastic option for a variety of projects, from bedroom walls to interior ceilings of restaurants and bars. Available for purchase at [maincompany.com](http://maincompany.com) / RRP:£58.20 M2.

Character and authenticity flow throughout the reclaimed boards



*Descend down the staircase and be transported to a cosy après-ski bar at Archer Street. Through a combination of carefully planned materials, it's easy to forget that you're in central London. The timber-clad chalet style bar offers a retreat from busy city life where cocktails aplenty can be enjoyed. The Main Company worked hard to bring the brief to life, creating an alpine style environment. Using a combination of materials, the perfect ambience was created.*

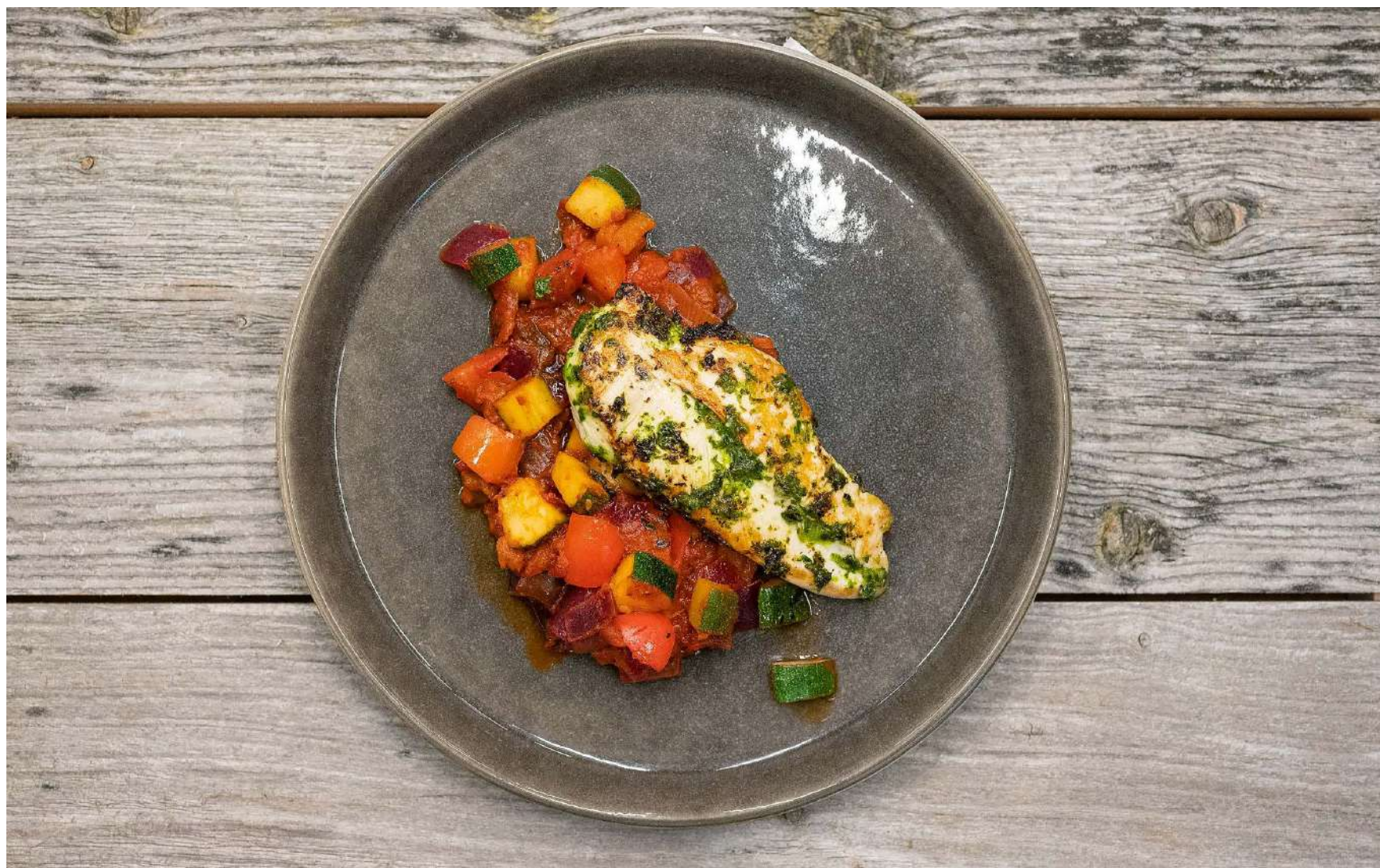
## Stunning Textures

The stunning textures, grains and characteristics of the wood work perfectly together. Silver Barn Board Cladding offers a striking silver and grey colouration, created by the combination of the sun and rain.

The weathered barn board has been perfectly paired with Engineered Distressed Oak, creating wonderful focal areas amongst the space. Lastly, Distressed Smoked Brown Engineered Flooring adds warmth to the space and provides a durable surface for the footfall of a busy bar.







## RATATOUILLE AND HERB CHICKEN - BY BORA

Blend all the marinade ingredients in a food processor and then use the mixture to marinate the chicken. Cut the vegetables into roughly 1 cm chunks. In a wok or a frying pan, fry the aubergine with olive oil until browned, adding the onions in after three minutes. After another three minutes add the red pepper and then the courgette another three minutes after that. Add in the tinned tomatoes, tomato puree, fennel and herbs, leaving to simmer for another three minutes. While the ratatouille is cooking, heat up the Tepan grill to 200 degrees and grill the chicken fillets on both sides until cooked. Once done, serve with the ratatouille and garnish with fresh herbs.

# Ingredients

### For the ratatouille:

1/2 aubergine  
1 small red onion  
1 red pepper  
1/2 courgette  
1 tin chunky tomatoes  
1 tbsp tomato puree  
1/2 tsp ground fennel  
1 level tsp herbes de Provence  
natural or sea salt  
ground pepper  
olive oil for frying

### For the chicken:

400 g chicken mini fillets

### For the marinade:

3-4 sprigs of parsley  
3-4 sprigs of basil  
1 garlic clove  
1 small shallot  
3 tbsp olive oil for frying  
1 tbsp lemon juice  
natural or sea salt  
ground pepper

### For the garnish:

Parsley and basil, roughly chopped



## BORA MULTI DRAWER

The heat drawer that can do more.

The BORA multi drawer can meet all your needs when it comes to heating up food and crockery – and do a fair bit more too. The clear touchscreen operating panel makes the appliance extremely simple to use while the handy pre-sets make it easier to regenerate or defrost food as well as to keep it warm. Even low-temperature cooking is possible. Combining the BORA multi drawer with a BORA X BO Flex oven and its numerous settings expands the range of functions even further.



## BORA X BO

Whether you want crispy roasts, delicious vegetables or light and airy, golden croissants: thanks to its gentle, uniform steam production, the BORA X BO Flex oven guarantees perfect cooking results – even when rustling up three fully loaded trays at once! The automatic steam extraction prevents hot steam from escaping into the room when you open the door. The BORA X BO can be used for roasting, baking, steaming and much more besides. At the same time, it is extremely easy to operate and even cleans itself spotlessly after use!

**BORA**



# Business Design Centre

## FREE Kitchen Design Consultation

At The Main Company we have years of experience transforming small ideas into beautiful and practical kitchens, utility rooms or restaurants. We do not charge for our initial kitchen design consultation service which includes a plan layout and corresponding estimate. All our estimates are fully itemised so you are able to see the costs of each and every element in your project. If you would like to discuss your project then please feel free to call us on 020 3846 1490, email [sales@maincompany.com](mailto:sales@maincompany.com)

In order to take advantage of this design consultation we ask you to send as much information about the project as possible. As soon as we receive your information one of our designers will schedule and confirm the appointment.

This information will provide our designers with a clear idea of the space and your personal requirements, enabling them to prepare any materials before your consultation. Please do tell us even the smallest of aesthetic details and how you and others will use the space.



Wall Mounted Henry Holt | RRP: £340.00-£410.00. / PHOTOGRAPHY (The 1810 Company)



## Henry Holt by 1810

The Henry Holt Collection is a brand new range of industrial-style kitchen taps in seven stylish finishes; chrome, brushed steel, copper, gunmetal, gold brass, matte black and brushed gold brass.

The range includes single and twin lever models together with a bridge mixer and wall-mounted models. All taps are supplied with colour-matched handles and fire-engine-red handles.

The Henry Holt Collection feature the Neoperl Aerator for a consistently smooth water flow and are supplied with a generous 5-year guarantee.



*Outside comes in*

Flood your home with natural light



The transformation of this area from standard double glass doors and extended by 1.5m, to the idyllic Crittal style glazed wall has created a connection to the garden while relaxing in a suntrap. The change which has been made to the natural light is immense.

This stunning Victorian townhouse had a complete transformation. / PHOTOGRAPHY (Chris Snook)



Airy light and stunning. / PHOTOGRAPHY (Chris Snook)


# Hammersmith

*Reclaimed wood, aged copper and Little Greene's Harley Green, just perfect.*

Combining aged copper and The Little Greene Company's Harley Green is a marriage which works brilliantly. The mind naturally meanders from copper to Verdigris and the unit colour is the perfect complement, stylishly finished in Buster and Punch's Antique Bronze handles. The discreet warm accents of wood embrace the warmth of the copper, this is repeated with the reclaimed engineered bar and bookcase, the eclectic mix of copper stools against the Harley Green panels echoing the choice of materials elsewhere in this stunning family kitchen.





Harley Green™ 312.  

Harley Green is such an interesting colour suiting those who cannot decide between a green and a blue. The Little Greene Company document that they have named this colour after the original owner of Wimpole Hall, Lord Harley, the paint hues which were found in his vast library built between 1716 and 1721.



Radiator similar by Bisque RRP: £2399.00.



Add interior texture with aged metals. / PHOTOGRAPHY (takis pollis)

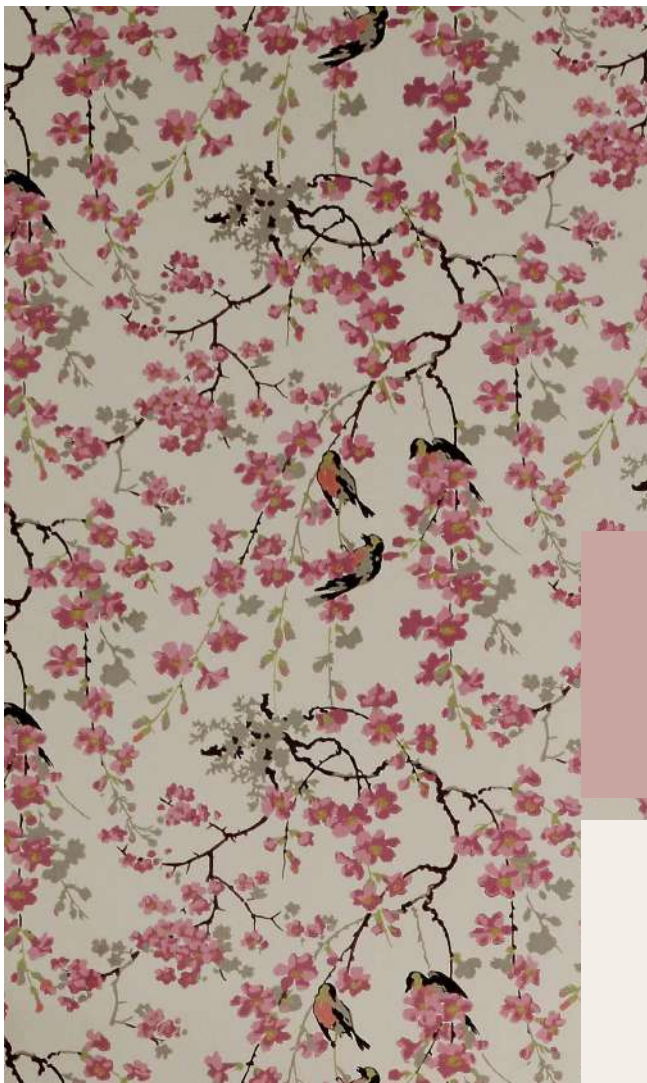




## Massingberd Blossom Mineral by Little Greene

'Massingberd Blossom' (Gunby Hall) c.1905 The wallpaper from which this design is drawn, is most likely of British Edwardian origin, but stylistically is very representative of the era's passion for oriental design, which – in a time of pre-modern artistic sensibility – was seen to retain a close connection to nature, simplicity and harmony.

The trailing blossom and repeating birds are elements commonly found in early, hand-painted chinoiserie, and the use of traditional surface printing retains a tactile quality that subtly offers more to the discerning eye than a conventionally mass-produced paper. It once adorned the walls of the Grey Room at Gunby Hall in Lincolnshire, a large country house built some 200 years earlier for the Member of Parliament William Massingberd, that was bequeathed to the National Trust in 1944.



# Little Greene

Over the past several years Little Greene has raised over £150,000 in support of breast cancer charities, donating proceeds from the sale of every tin of paint and roll of wallpaper sold throughout Breast Cancer Awareness Month in October. For 2021, the company has pledged a minimum donation of £20,000 to a series of charities to mark Breast Cancer Awareness Month.

This year Little Greene has partnered with a selection of small charities across the UK, each with a focus on providing invaluable emotional support to those undergoing breast cancer treatment. At a time when people are struggling economically and emotionally, Little Greene's donation will provide some personal support to help individuals and their families through a difficult time.

'It's a real privilege to be able to support this wonderful group of charities up and down the country, they offer the much-needed help for those affected by breast cancer. Whilst there are several charitable organisations doing exceptional work raising funds for cancer research, our focus with this campaign is to ensure no-one goes through treatment without somewhere to turn to for emotional support. Aided by our fantastic stockists and customers nationwide, I'm confident we will have another hugely successful year raising funds for these precious services.' – David Mottershead, Founder & MD Little Greene.

For the whole of October 2021 Little Greene customers have actively helped to support people with breast cancer. Little Greene has pledged 15p from the sale of every tin of paint and roll of wallpaper sold via the company's UK-wide stockists, or through its website [www.littlegreene.com](http://www.littlegreene.com) to the following charities. The Christie Charitable Fund, Keeping Abreast, Breast Cancer Unit Appeal - Yeovil Hospital Charity and The Breast Cancer Action Group (Wolverhampton and District) with a total minimum donation of £20,000 pledged.

### - Hellebore (275)

A dusky pink, providing the right amount of prominence and sophistication for any room. Contains a muted violet note.

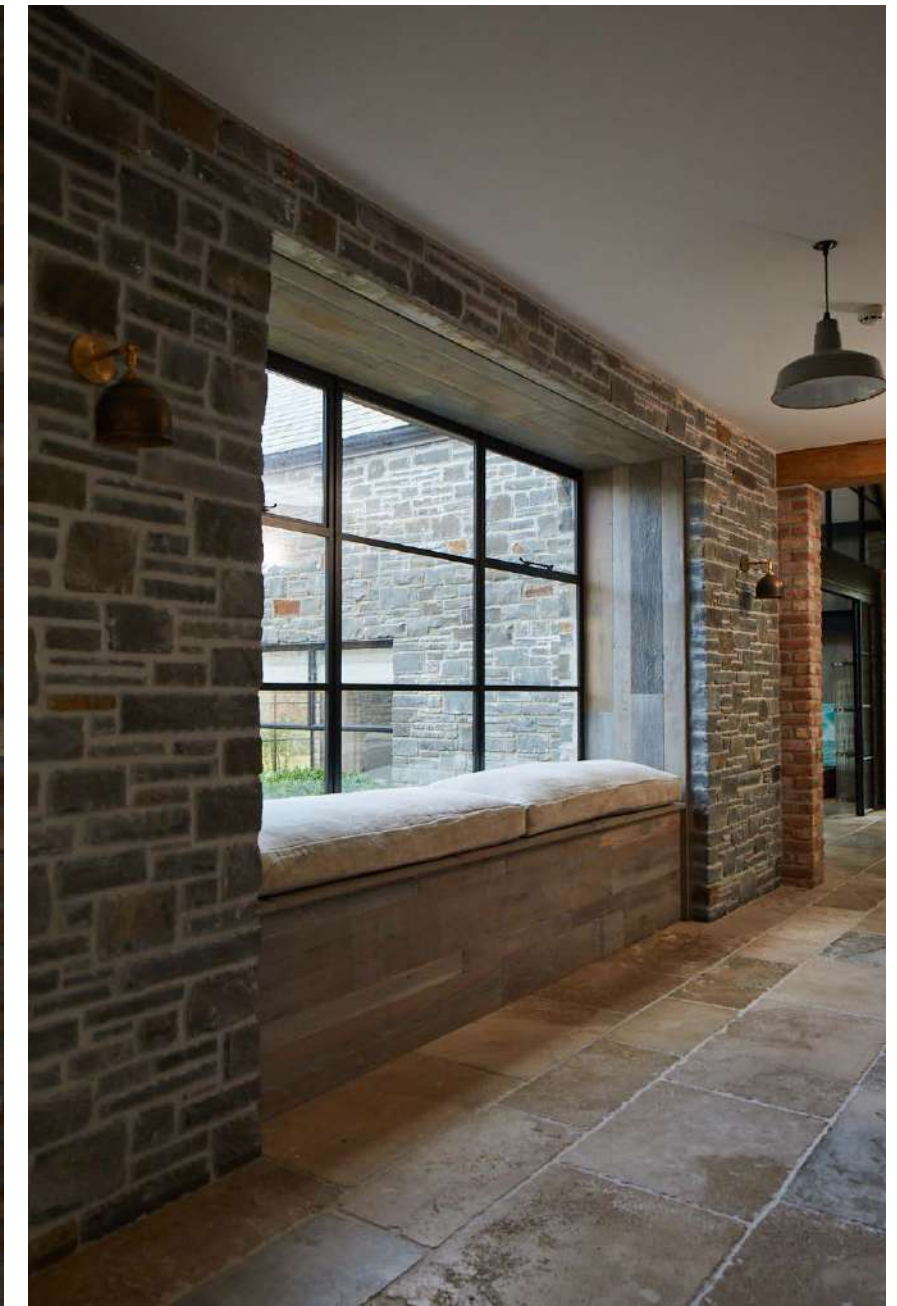
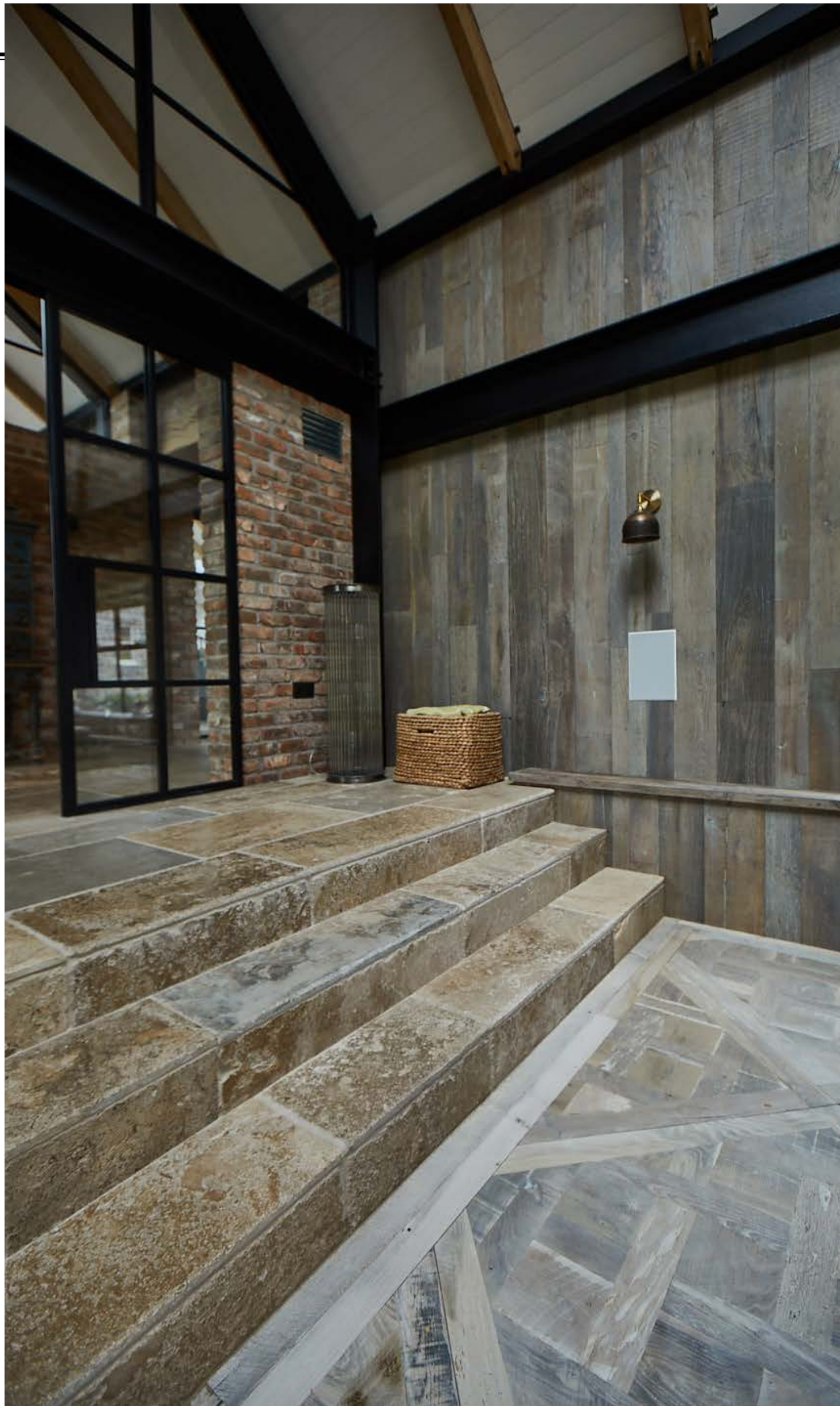
### - Hollyhock (25)

A warm and pale neutral, this colour has been used extensively for many years as it is very easy on the eye.





# Reclaimed Cladding



Flooring Project 12 - Cornwall / PHOTOGRAPHY (Sean Knott)

# Cornwall

## Reclaimed Wood Makes Interiors Truly Unique

Set in the beauty spot of Cornwall, this stunning holiday home is set amongst beautiful countryside and rugged coast. The farmhouse has been meticulously restored into a bright and modern holiday home.

The Main Company played a key part in the renovation of the Cornwall property, supplying high quality cladding, flooring, furniture and bespoke kitchens. This property perfectly

demonstrates how The Main Company can bring rustic charm and character to your home, in a variety of ways so that both work perfectly alongside one another. Previously a farmhouse, The Main Company worked closely with the Designer and Project Manager over two years to update the space, whilst remaining sympathetic to its previous life. Reclaimed Wall Cladding provides a stunning focal point in the

entrance hall, perfectly paired with weathered tiles, critall doors and beams. A window seat was also installed, not only utilising the space, but providing an additional spot for putting on shoes and enjoying the views.

This wonderful renovation showcases how reclaimed materials can be used in a variety of ways, and will be enjoyed as a home away from home for years to come.



# Meet Wild Escapes



## ESCAPE THE ORDINARY AND RECONNECT WITH NATURE

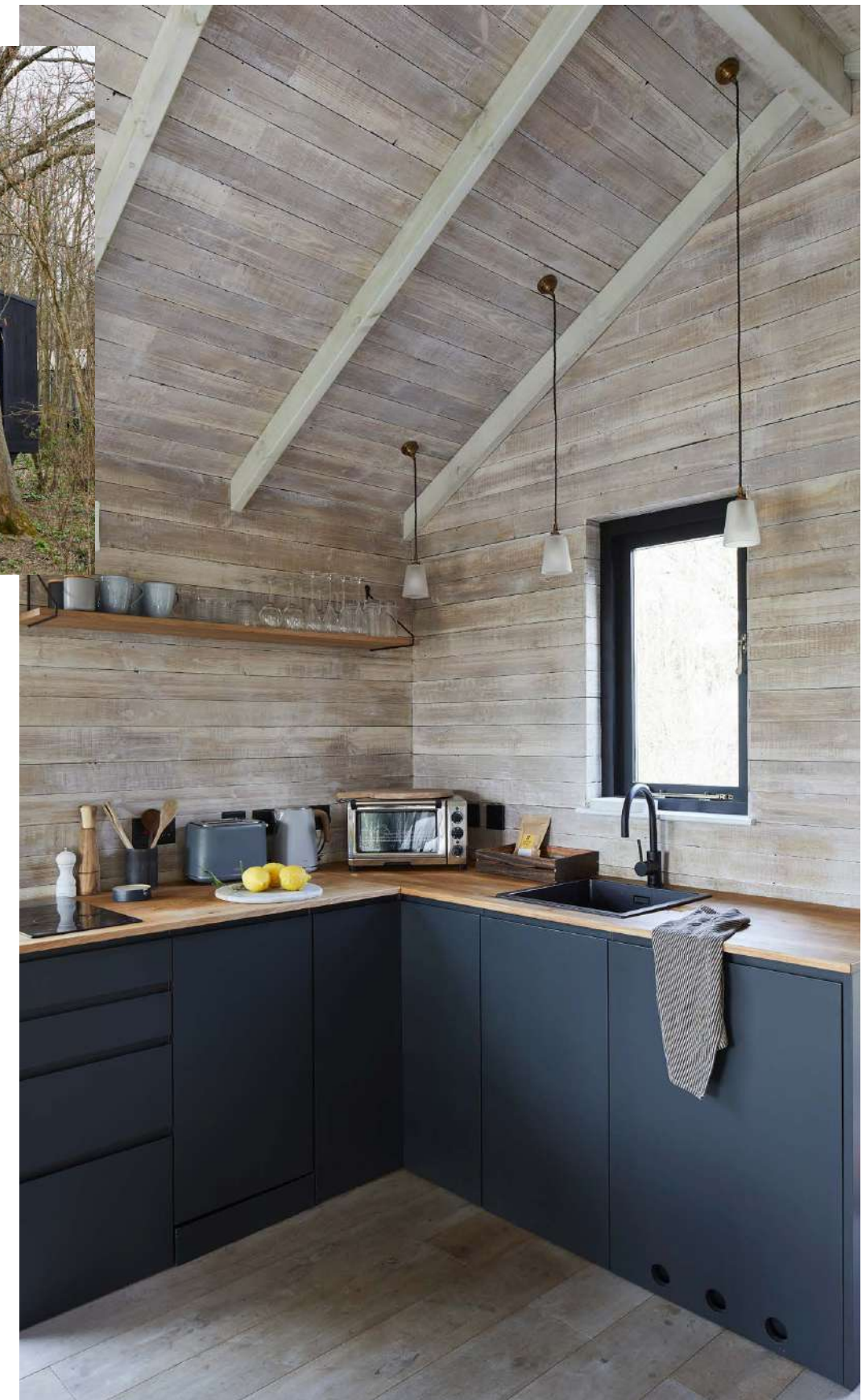
Set in tumbling, unspoiled surroundings, Wild Escapes offers the perfect sanctuary and retreat. The Main Company had the pleasure of working with Wild Escapes on a number of their stunning tree houses, helping to bring their visions to fruition. Sustainability was key, and the values and passion of Wild Escapes aligned perfectly with our own.

Fullerton Farm is home to the first four tree houses, offering an idyllic experience and outstanding views of the Hampshire Downs. The Perigold Tree house offers Scandinavian style living space, with cladding and wooden flooring throughout, as well as other natural textures and materials and contrasting black accents.

The Perigold Tree house offers the perfect

relaxing place to unwind and sample all that Fullerton Farm has to offer, from sampling the delights of the vineyard to truffle hunting, there are so many activities to enjoy, as well as the surrounding views. The tree house offers a luxurious space to unwind and de-stress, and the interiors further enhance that experience.

## The Perigold Treehouse



Origin 120 Cladding | £47.40 m2



Old White Mill Board Cladding was used throughout. The Perigold Treehouse. PHOTOGRAPHY (Chris Snook)

*The sleek and elegant, pared back Scandinavian style, inviting you to revel in the simple things as you soak in the giant zinc bathtub outside.*





# Meet Wild Escapes

## ESCAPE THE ORDINARY AND RECONNECT WITH NATURE

It was a pleasure to work with Wild Escapes on The Fallow Treehouse. We are passionate about natural and sustainable materials, as are our friends at Wild Escapes so it was the perfect match.

The Fallow is one of the four new tree houses at Fullerton Farm, it offers stunning living accommodation that blends perfectly into the surrounding countryside. Its raw and natural materials and textures complements Wild Escapes desire to be sustainable and use organic materials where possible. The Fallow comprises of a living

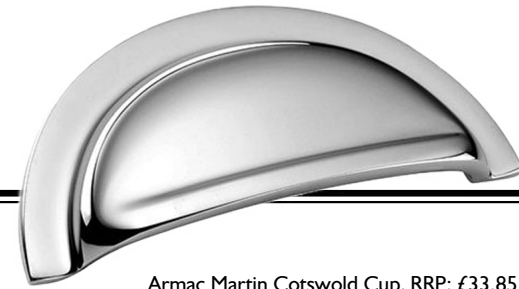
area, bedroom, bathroom and cloakroom, perfect for muddy boots and little paws!

Full of rustic charm and character, our Brushed Rustic Mill Board cladding was used throughout for the walls and ceilings, and this was complemented by a herringbone style floor. Our Brushed Rustic Mill Board cladding is the perfect choice for those looking to bring an organic, outdoor feel inside. The rich tones of the wood are enhanced further by deep chocolate shades and the contrasting grain that swirls from plank to plank. The cladding and flooring

work perfectly alongside the kitchen cabinetry and other materials.

Reclaimed from an old Weaving Mill in Derbyshire,

the planks have been meticulously restored and brought back to life by our master craftsmen at our Yorkshire workshop. The cladding has been installed using a glue and face fix and can be used in a variety of ways and laid in a number of formations. Our Brushed Rustic Mill Board complements the tree house perfectly, with an array of characterful features such as the dark grain, original nail holes and cracks, creating a natural and relaxing environment. The Herringbone flooring adds a stylish, yet classic twist to the space and gives a somewhat opulent and decadent feel to the sanctuary. All of our planks are finished to the highest of standards, creating a durable and hardwearing surface for both residential and commercial properties.

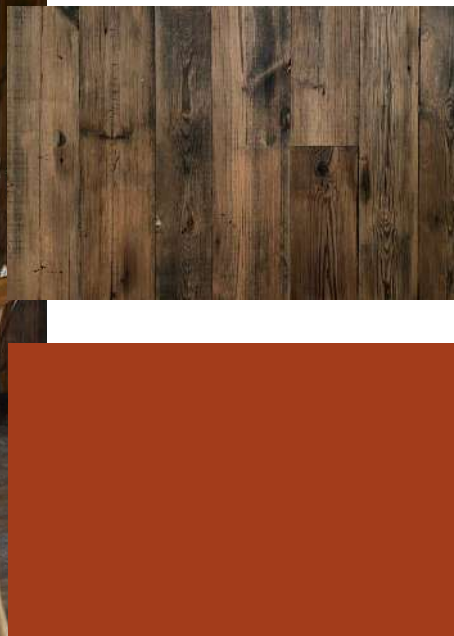


Armac Martin Cotswold Cup. RRP: £33.85. PHOTOGRAPHY (Armac Martin)

## The Fallow Treehouse



Reclaimed from a Weaving Mill in Derbyshire, the wood has been brought back to life and restored by our master craftsmen. Our Brushed Rustic Mill Board has been lovingly restored and offers an array of characterful features such as a dark grain, original nail holes and cracks, making it ideal for creating a warm, welcoming space. All our cladding is installed using a glue and face fix and can be used in a variety of ways internally in both residential and commercial spaces.



### - Origin 4

The rich chocolate shade of the pine, contrasted with the dark grain will add vibrancy and a touch of opulence to your space. £47.40m2

### - Heat (24)

A deep red paint colour is a shade of burnt orange that creates a strong accent in any contemporary colour scheme.







## CONCRETE

We work with The Poured Project to produce perfectly poured concrete worktops, sinks, basins and cladding. They are all manufactured by hand in Yorkshire, just like our products.

Versatile and incredibly durable, concrete has a raw beauty akin to natural stone but can be combined with an array of pigments and cast into any shape. This means that, with the right expertise, the possibilities for bespoke design are endless.

If you're looking for a kitchen worktop, vanity unit or even bath – get in touch today.



## Basalt (221)

Basalt is so charismatic and has a much revered deep blue undertone. In low light it will look black but it has more character and is much easier on the eye than a pure jet black. It's popular for front doors, kitchen cabinets and interior walls. For a great complement use French Grey Pale instead of white and Juniper Ash for tonal coordination.



# Cornwall Is Always A Good Idea

Set within a rural Cornish landscape by the coast, The Main Company carefully designed the stunning kitchen, reclaimed flooring and fitted furniture for this beautiful Cornish holiday home. In addition to the main house The Main Company also created the flooring and a smaller kitchen for the annex cottage close to the property.

Featuring original reclaimed materials, that are hundreds of years old, including wooden beams, Cornish stone and brick walls, the kitchen was designed to blend in seamlessly with the rest of the property and its rural surrounding.

The Main Company utilised the kitchen and dining room open plan space to create a beautiful kitchen that combines the family's love of entertaining and dining; from wall cladding and flooring, to a stunning kitchen where timeless Shaker meets rustic. Painted in Little Greene's Basalt blue, two large Main Company pantry units with softened Shaker doors and a

housed Fisher & Paykel fridge freezer, reclaimed cupboards with a concrete worktop run alongside the main kitchen wall with a fabulous Lacanche range cooker. The island has an aged copper top with the concrete sink taking centre stage, they are surrounded on two sides by stunning, chunky, reclaimed wood from a chapel and all sit on the smooth painted cabinets.

### *In conversation with The Main Company Designer & Project Manager of our Cornwall project*

Working closely with the Designer and Project Manager for two years, The Main Company were devoted to the success of this design. This project incorporates everything The Main Company has to offer, exemplifying the rustic nature and bespoke style of their wooden flooring options, furniture and kitchens.

This project was a huge design, over the course of two years this beautiful new farmhouse was

transformed into a bright, modern holiday home. After completion of this fantastic project, we interviewed the Designer and Project manager, Paul Baker.

### **1) What inspired the colour scheme of the kitchen?**

I spent days and weeks looking through magazines, websites and promotional material looking at many different colour combinations. Having already had a good idea of what the flooring would be in the kitchen, we needed something that would offer a contrast to the lighter colour. I've always liked basalt as a colour and with the help of Karan Main, we thought it would work well with the exposed brick and stone. The varied colours of the exposed reclaimed timber on the drawers and breakfast bar, and not to mention the vintage copper and concrete, basalt became the obvious choice.

(con'd p.35)



Bespoke Kitchen Project 27 - Cornwall / PHOTOGRAPHY (Sean Knott)





## Reclaimed Wood

Reclaimed wood is timber that has been taken from its original application and repurposed. In many cases, this timber comes from old buildings such as barns or warehouses and on docks, but reclaimed wood can also come from a range of other structures such as boxcars and barrels. It is then reclaimed for use in our cabinetry, flooring, and furnishings.

You may have heard of similar terms such as recycled or salvaged wood, but these do not mean the same thing as reclaimed wood.

Recycled wood has been processed down into mulch and then reconstructed into new wood, unlike reclaimed wood, which can be cut up or reshaped but is otherwise kept in its original form.



# Small Details Count

## 2) What do you think is the most successful space / interior within the property?

Such a difficult question! I love all aspects of the house, but for different reasons. The primary kitchen is incredible and a real statement as you walk through the main entrance hall, it's a large space, but it certainly does not feel cavernous – it actually feels incredibly homely. The boot room is another favourite and always encourages positive comments, which is a new room with new furniture (it couldn't feel further from). I love the layout of this room and again the use of different materials really gives it a warm feel as if it has been in a grand country farmhouse for years – exactly how it should be. The cottage kitchen contrasts significantly from the primary kitchen. It really does feel like a traditional country cottage kitchen and fitting all the units, worktops and appliances in a limited

space was a huge success. Choosing which room I prefer is just not possible I'm afraid, I genuinely love them all!

## 3) What were the owners' needs? How did you meet their needs / expectations?

Quite simply, the house surpassed all the owners' expectations. They wanted a house that felt as if it had been there for years, and considering it is about 90% new, this was quite an achievement. They wanted the it to be homely, inviting, warm and capable of hosting large numbers of guests, without feeling claustrophobic. Quite an achievement considering the size of the house. The owners wanted it to feel that it was being lived in all year round and using such a wide variety of different materials really provides this warmth.

## 4) Given the range of choices for flooring and wall cladding options at the Main Company, what was it about the material

## that made you choose those flooring options and wall cladding?

This was easy. We used two different finishes for the majority of the cladding and flooring and I wanted something that was reclaimed, not too dark and felt as though it has always been there. I think we achieved this superbly. Karan listened to what I thought I was looking for and without exception, she interpreted and delivered it beyond my expectations. Visiting the Main Company workshop and showroom really did help as it became immediately evident that the materials available were precisely what I was looking for. The other flooring success is in the cinema room, the Versailles flooring. I had seen something similar in a publication and asked The Main Company for their interpretation. Tom Main came up with a flooring which is absolutely stunning, and the amount of work required for each panel was not taken for granted.





# Bespoke Kitchens From £6,900



**London Showroom**  
Business Design Centre, Islington  
N1 0QH

**Yorkshire Showroom**  
The Green, Green Hammerton  
YO26 8BQ



[www.maincompany.com](http://www.maincompany.com)  
[sales@maincompany.com](mailto:sales@maincompany.com)

01423 330 451 · 020 3846 1490



@themaincompany