



THE MAIN COMPANY

ESTABLISHED 1978



KITCHENS FURNITURE FLOORING CLADDING

A FAMILY BUSINESS SINCE 1978

The Main Company has been creating highly individual bespoke kitchens that are full of personality and unique style since the seventies; complemented by a vast range of beautiful furniture designs, and engineered and reclaimed flooring and cladding, the family-run company is known for its inspirational projects and products. Situated in an idyllic part of rural North Yorkshire, the 20,000 square foot showroom and workshops were established in 1978 by Chris and Karan Main and has grown from strength to strength over the past 35 years.

Joined by sons Alex and Tom in 2004, the family business is bursting with knowledge and ideas, built up from the vast experience gained from trading within the national and international markets and its justifiable reputation for excellence in truly bespoke designs.

The Main Company's kitchen designs bring authentic character and charm to today's homes with unique textures and finishes. Combining organic design and meticulous craftsmanship, The Main Company pride themselves on using the very best in new, salvaged and reclaimed materials to create custom-made products abound with individuality.

Karan Main
Chris

CHRIS & KARAN MAIN
Founders of The Main Company



HIGHLY INDIVIDUAL BESPOKE KITCHENS

AUTHENTIC
**CHARM &
CHARACTER**

The best kitchens are those with a story to tell and The Main Company has a range of inspirational and bespoke projects commissioned with creativity at their core. Its 20,000 square foot showroom showcases an expanse of kitchens unique in

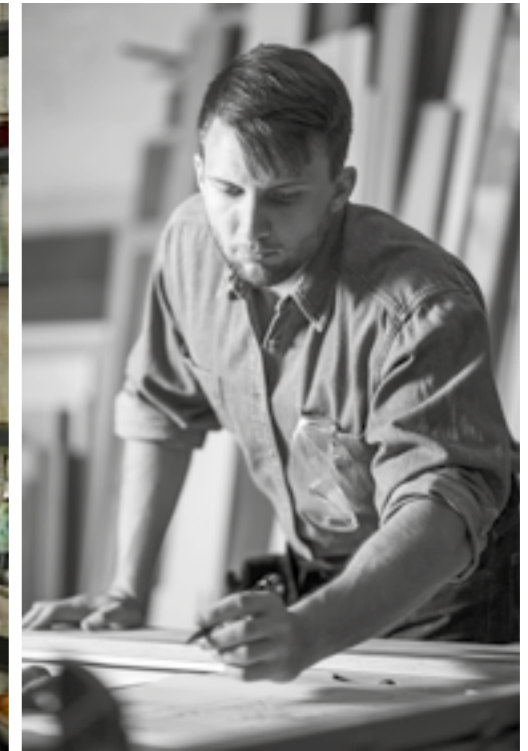
character. Incorporating both traditional and modern design, each and every project is handmade by The Main Company's master craftsmen in its North Yorkshire workshops, using a range of authentic materials to create a truly bespoke look.



THE BEST IN NEW & RECLAIMED MATERIALS

METICULOUS
**DESIGN &
CRAFTSMANSHIP**

With no job too big or too small you can feel confident that The Main Company will create, modify or redesign the perfect space or item just for you. Using reclaimed materials to produce distinctive and individual designs, every piece of bespoke kitchen cabinetry and furniture is handmade by local craftsmen in its North Yorkshire workshops.



HANDMADE IN OUR NORTH YORKSHIRE WORKSHOPS

WOOD

and its natural beauty is our

PASSION

One of the largest suppliers of reclaimed timber in the UK, The Main Company uses wood that can be over 100 years old in order to create a truly bespoke kitchen that exudes character from years of authentic wear. From clean oak, character oak, traditional reclaimed pine, rustic pine, maple and cherry, the bespoke kitchen company offers a wide range of finishes to complement different living environments and personal style.

Using kiln dried hardwood to construct its painted kitchens' frames and doors, The Main Company use a variety of quality materials ranging from solid oak to hand-aged plywood in its internal cabinetry. Its natural wood kitchens are also manufactured using oak, maple, reclaimed pine and cherry ensuring a truly individual look is created within homes.



KITCHEN CASE STUDIES

THE BEST KITCHENS
ARE THOSE WITH A STORY TO TELL

Cobham

Set on the edge of the nearby estate woodlands, the Cobham cottage is one of two unique clapperboard cottages designed in classic Nordic style. Reflecting the Scandinavian influence within the property and woodland views outside, the design of the kitchen embraces the beauty of natural wood with raw reclaimed pine cabinetry and rustic wooden cladding chosen for the open larder.







Combining reclaimed wood with contrasting dark paintwork and pale marble worktops, a truly modern kitchen design is achieved. Glazed cabinets with white metro tiles are introduced above the sink to create a display for glassware, whilst the bespoke corner larder makes the most of the awkward space next to the stairs with built-in drawers and floor-to-ceiling shelving.

Rushmere

Combining traditional Shaker Style cabinetry with on-trend warm copper accents and textured wood, the Rushmere kitchen project updates classic influences with a design that perfectly embraces modern lifestyles in the kitchen. A complete renovation of the space allowed for a contemporary redesign with rich dark blue painted cabinets highlighted by polished copper plate handles and an aged copper mirror splashback.







Sleek Carrara Marble is fitted for the worktops and creates a contrast to the hand aged wooden breakfast bar, carefully positioned within the open-plan space to provide the ideal spot for either entertaining or socialising as a family.

Weybridge

Celebrating classic country cabinetry for the modern home, the Weybridge kitchen project combines the dusky olive tones of Little Green's Grey Moss with natural wood shelving and rustic exposed brickwork. Painted cabinets are paired with a subtle quartzite worktop chosen to reflect light back into the north-facing kitchen, whilst the statement antique bronze cooker hood introduces luxurious warmth and character to the room.







A coordinating display dresser and statement central island complement the main units of the kitchen, providing the option of a sociable breakfast bar and plenty of extra storage space. From floating oak shelves that have been transformed into a morning coffee station to the distinctive materials continued into the design of the boot room, the Weybridge project is a truly bespoke kitchen created to suit all aspects of the homeowners lifestyle.

Berkshire

The Berkshire project aims to reflect the homeowners' unique sense of style by effortlessly combining timeless kitchen cabinets with rustic wood textures and industrial-inspired stainless steel. Dramatically dark inframe oak drawers and cupboards contrast the white walls and pale stone flooring of the rest of the room, with pewter fixings and reclaimed wood adding a sense of age to the modern space.







The natural texture of the reclaimed breakfast bar provides a central feature for the room, as well as the perfect place for the family to enjoy meals together. Bespoke individual details are included throughout, from the custom-built gin rack to rustic chopping board storage pockets and a floor to ceiling larder complete with downlights and handy additional worktop space.



Oxford

Taking inspiration from the traditional country kitchen, the Oxford project explores classic Shaker cabinetry in a relaxed colour palette. Making the most of the spacious open-plan layout, the central island features a breakfast bar and provides handy extra cupboards and drawers for storing the essentials. Painted in a rich forest green, the island creates a statement and encourages a social space where the family can cook and eat together.







Bespoke cabinetry details are included throughout the kitchen, with built-in drawers included under the windows and hidden shelving created in the wall next to the AGA cooker. Accessed through a glazed door in the kitchen, a custom larder was also created as part of this project, with an additional sink and plenty of storage space to ensure a place for everything.

Hertfordshire

The Hertfordshire project makes the most of the vast light and space within the open-plan room, with dining and living areas connected to the kitchen and views to the garden throughout. Elegant linear cabinets in a classic Shaker Style are painted in neutral tones with a dark contrasting kitchen island creating a statement.







Sufficient storage is considered in every detail of the kitchen, from hidden cupboards for storing away cooking oils to a home bar dresser unit and pantry built into the cabinetry. The expanse of the room and bespoke details ensures this project provides the ultimate entertaining space, where family and friends can gather together.



Portabello

Kitchens need to make a statement, be functional and a pleasure to walk into each and every time. The Portabello kitchen mixes painted units in contrasting colours with reclaimed wooden tops and sleek stainless steel surfaces, all complemented by stainless appliances.







The painted units feature a recessed kickboard to allow extra room while standing at a preparation area. The hardware used is in a pewter finish.

Cattal Street

A kitchen that undoubtedly makes a statement, this cool and contemporary barn conversion is the perfect space for this truly bespoke kitchen project. Featuring a reclaimed engineered pine wood finish of Oldham Mill Board, solid oak drawer boxes and lacquered birch plywood carcasses, the impressive room provides the ideal living and dining setting for the homeowners and their three children.







The urban fixtures and fittings complement the rustic style of the kitchen. Both practical and stylish, the stainless steel push-to-open pantry doors and original reclaimed barn breakfast bar add to the sophisticated salvaged charm of the space. Complete with a rendered concrete bookcase on the island, a polished concrete floor, reclaimed clad walls and a statement aged patina zinc top and backsplash, the truly bespoke kitchen offers a distinctive modern update on industrial style.

Shropshire

With the Shropshire kitchen designed as part of an entire home renovation, the owners had the opportunity to tailor the style and design details of their new kitchen to suit their lifestyle. Set in the heart of the traditional 1930's home, the kitchen was carefully considered to balance modern elements with a classic look.







Shaker-style cabinets are painted in neutral tones to introduce warmth whilst maintaining the light and airy feel of the surrounding space. Embracing the open-plan layout, a long island was designed to ensure a smooth transition between the separate areas and floating reclaimed wood display shelves make a feature of empty wall space. Custom storage solutions include slim built-in shelving for the owner's collection of cookery books and spices, as well as appliance cupboard to keep the worktops clear and the kitchen looking its best.

MODERN CHARACTER

STUNNING
**METAL
FINISHES**

From cabinetry clad in the finest quality metal finishes to the introduction of a copper sink, brass taps or copper-plated pans, the use of metals ensure a unique statement that will transform everyday routines in the kitchen. With vast options to choose from, the range of metal finishes available include rich Aged Brass, Copper and Bronze as well as timeless Stainless Steel and Zinc finishes. Meticulously handcrafted to cover kitchen units or create stunning counter tops, metal finishes can be combined with reclaimed wood and painted cabinetry to ensure a contemporary style identity that doesn't compromise on character.



SOURCED WORLDWIDE

RECLAIMED FLOORING & CLADDING

The Main Company has built a justifiable reputation for producing unique and high quality wooden floors and cladding. Available in reclaimed and hand-aged finishes, The Main Company's reclaimed timber selection is amongst the largest in the UK. The Main Company's on-site kilns allow all the timber to be dried to the correct moisture content

prior to order. As one of only a few companies in the UK that engineer reclaimed timber flooring that is compatible with underfloor heating, The Main Company's state-of-the-art machinery ensures that flooring and cladding can be re-machined to the highest of standards.





Offering a striking selection of reclaimed and hand-aged flooring and cladding, each and every board is meticulously worked by hand by one of The Main Company's master craftsmen in its Yorkshire workshops.





Sourced from unique and one-off materials, The Main Company's brushed, oiled, lacquered and original-finished cladding is guaranteed to add rustic character to interiors, making it perfect for feature walls.

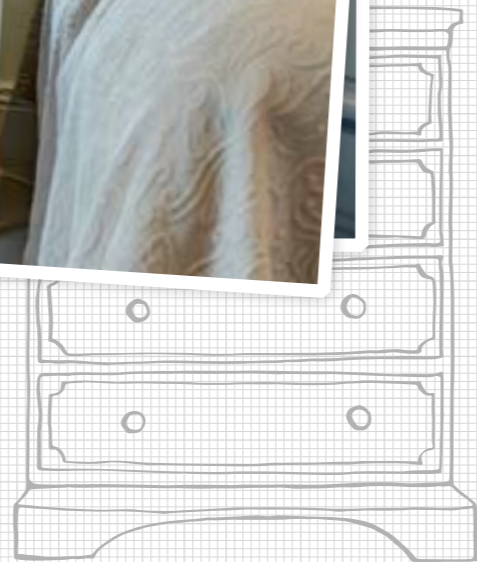
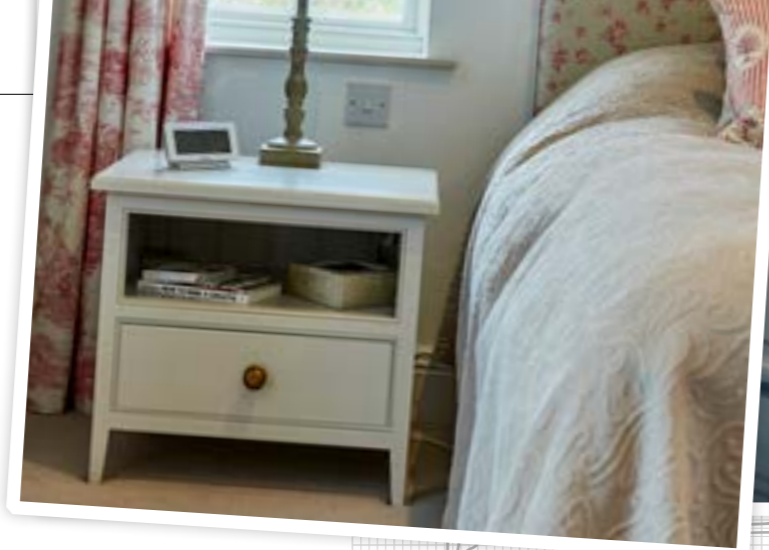




The reclaimed quality of the salvaged wood ensures that each board is slightly different to the next, enabling The Main Company to create a truly beautiful and bespoke floor or clad wall that exudes individual character.



EVERYTHING IS POSSIBLE

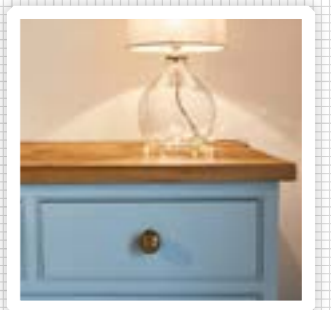
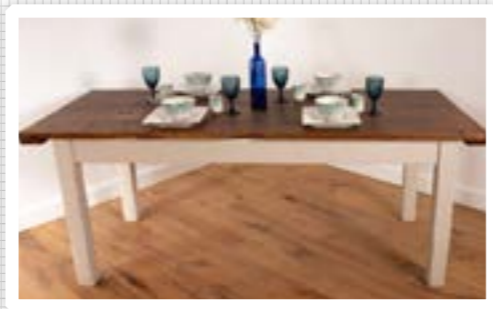


BEAUTIFUL FURNITURE COLLECTION

Years ago, The Main Company was renowned for restoring old furniture, and the pieces they sold were often original and antique items. Most of the pieces were painted, and in the fashion of the time, stripped back to the original golden pine and then waxed.

As interior trends changed, so did this process. Now original painted pieces are left to show provenance and authenticity, and people appreciate different styles and original construction techniques. It is these foundations that have formed the basis of The Main Company's 'Traditional Furniture Range' – designs which stand the test of time featuring unlimited sizes and classic door styles, resulting in a piece of furniture which is perfectly proportioned and complements any room.

Taking modern living requirements and functionality into consideration, The Main Company's innovative designs combine technology and traditional design to produce a truly timeless furniture collection.





themaincompany.co.uk

Photography by Sean Knott www.seanknott.com



THE MAIN COMPANY

ESTABLISHED 1978

The Green, Green Hammerton, York, North Yorkshire, YO26 8BQ
T. 01423 330451 E. sales@maincompany.com www.themaincompany.co.uk